

CELL :- A431 CELL NAME:-De-comp assy MACHINE / STAGE:-Riveting process OPERATION : 10

KAIZEN THEME :- : A431 De-Comp Assay
Functional problem after assembly in Engine Assy

IDEA :- Feed is set to optimum range

WIDELY/DEEPLY:-

Countermeasure:-
To provide the Pick up sensor, (Interlinkage to be provided between spring tray & m/c by providing sensor) If spring is not taken from tray m/c will not start

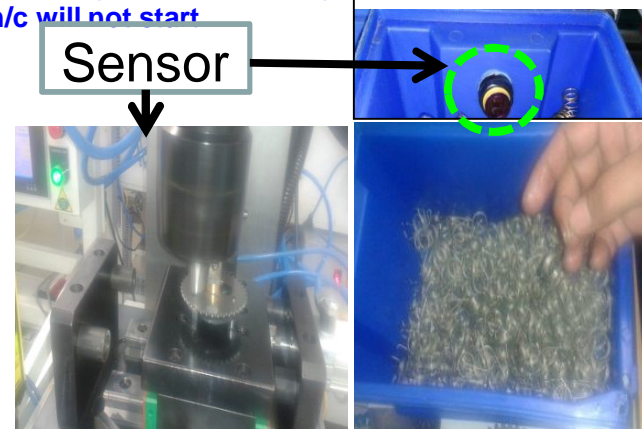
BENCHMARK	3 No.
TARGET	0 No.
KAIZEN START	21.12.2015
KAIZEN FINISH	

PROBLEM / PRESENT STATUS :-
:-To Prevent the customer complaint : A431 De-Comp Assay Functional problem after assembly in Engine Assy



Manual process

BEFORE



TEAM MEMBERS :-
Mr.Dashrath & Mr.Dinesha.M

BENEFITS :-

- 1) Prevent the customer complaint & PPM
- 2) Prevent the In-house rejection

Why Why Analysis :-

Why 1- 2LP De comp assembly functional problem at Engine assy @ Yamaha.

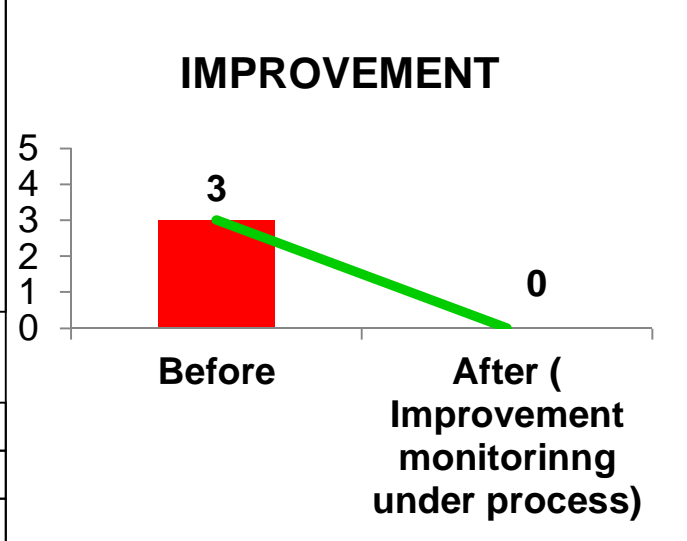
Why 2- De comp assembly fly-weight free movement

Why 3- Spring missed in De comp assembly

Why 4- Manual process (Poka)

ROOT CAUSE: POKA

RESULT :-



KAIZEN SUSTENANCE

WHAT TO DO : Added in poka yoke sheet
HOW TO DO : simulation with sample
FREQUENCY :- Shift starting.

COST INCURRED FOR MAKING KAIZEN

MATERIAL COST IN RS	LABOUR COST IN RS	TOTAL COST IN RS
2000	200	2200

SCOPE & PLAN FOR SELF PLANT HORIZONTAL DEPLOYMENT

SR. NO.	CELL	TARGET	RESPONSIBILITY	STATUS

SCOPE & PLAN FOR OTHER PLANT HORIZONTAL DEPLOYMENT

SR. NO.	CELL	TARGET	RESPONSIBILITY	STATUS
1.				

REGISTRATION NO. & DATE : 947 & 21.12.15

REGISTERED BY :- Mr.Dashrath

MANAGER'S SIGN :- Mr. Vijay Kumar